



*LCHSA presents the 80<sup>th</sup> Annual*

LUDWIG'S CORNER  
**HORSE**  
SHOW

**SHOW  
HIGHLIGHTS**

**\$10,000** LCHSA Jumper Classic Mini-Prix

**\$5,000** LCHSA Hunter Derby

**\$2,500** LCHSA Pony Hunter Derby

**\$1,500** M&S Child/Adult Jumper Classic  
Hunter & Jumper Stakes

Trophies - Division & Grand Champions - tcjTIP Divisions & Awards  
Best Child Riders & Adult Rider - Leading Trainer & Emerging Trainer  
Hunter & Jumper Style Awards - USHJA Outreach - Open Schooling on Friday

PHSA Regional / PEL / ISSO / tcjTIP / Marshall & Sterling

*Proceeds from the Annual Horse Show & Country Fair benefits the LCHSA Foundation, a 501(c)3.*



[www.ludwigshorseshow.com](http://www.ludwigshorseshow.com)

**Stabling Requests Due:**

**Friday, Aug. 18, 2023**

**Pre Entries Due: 9PM Thur., Aug. 24**

[www.horseshowing.com](http://www.horseshowing.com)

*Building Your Dreams,  
Preserving Your Legacy*

  
**PRECISE**  
BUILDINGS

717.768.3200 | [precisebuildings.com](http://precisebuildings.com)



Horse Barns | Bank Barns | Indoor Arenas | Garages | Restoration | Venues

# Welcome

to the 80th Annual Ludwig's Corner  
Horse Show and Country Fair, we're glad to see you!

Happy 80th Birthday Ludwig's Corner Horse Show and Country Fair! Sometimes when I walk the show grounds after everyone has gone home, I think about our founders, their dreams, and goals for this wonderful Chester County Treasure. They would be pleased that under the watchful eye and hard work of volunteers through the years their dream lives on.

Ludwig's has received a few notable birthday surprises this year! The footing in the Rosato Oval is being replaced with GGT™ fiber and Covia Corp sand. These new materials will be mixed and expertly applied by Apex Arenas LLC, owned by Nathan Panetta. The Archie Grace Berry Foundation, a longtime sponsor, also contributed to this wonderful gift.

More amazing gifts from the Archie and Grace Berry Foundation, through their very generous grant, are the means to excavate the land under the stabling tent, taking out some of the low spots and making our stabling pad more comfortable for our equine partners. A much needed and long-awaited new gator allows us to move endless smaller loads around the show grounds for our events.

Haines and Kibblehouse, via Tyler Haines, donated a large water tank on the north side of the show grounds providing means to store our own well water for the rings during horse shows.

We are so excited to have you join us for some wonderful new 80th anniversary exhibitions. These include the Kimberton Hunt, the Muddy Creek Vaulters, and the International Mounted Games Association. You won't want to miss these!

Thank you to all the volunteers and benefactors who give tirelessly to protect and promote our Ludwig's Corner Horse Show Association. Happy 80th Anniversary!

Sincerely,  
SARA JANE LUBRANO  
LCHSA Board President

## **2023 LCHSA BOARD OF DIRECTORS**

---

Sara Jane Lubrano – President  
Barbara Van Horn – Vice President  
Barbara Mako – Treasurer  
Kelly Cocke – Secretary  
George Cooney  
Wayne Grafton  
John Jacobs

Steven Bazil JD  
Kyle Wherrity  
Amy Thompson  
Bill Gondy  
George Dulchinos  
Lynne Cooksey – Ex Officio  
Judy Rosato - Ex Officio  
Ed Bacon - Ex Officio

## 2023 OFFICIALS

The following have been invited to officiate.  
Show management reserves the right to vary or add to these names.

Show Manager	Nathan Panetta .....	Brookeville, MD
Judge R H/HE/J	Jeffrey Ayers.....	Sellersville, PA
Judge R H/HE/J	Michelle Morosky Patience.....	Perkasie, PA
Judge R H/HE/J	Sheryl Sutherby .....	Ellicott City, MD
Course Designer	Nathan Panetta.....	Brookeville, MD
Show Coordinator	Kelly Cocke.....	Annandale, VA
Show Secretary	Katie Benson.....	Whitehouse Station, NJ
Show Office	Sylvia Eckenrode.....	Lebanon, PA
Announcers	Dain Garland.....	Chambersburg, PA
Ring Crew Chief	Hector Beltran.....	Wellington, FL
Paddock Masters	Rhiannon Citron .....	Malvern, PA
	Jay Raach.....	Schwenksville, PA
Farrier On Site	Scott Eckenrode.....	Lebanon, PA
Veterinarian On Call	Stillmeadow Equine Veterinary Service 610-686-6006 .....	Coatesville, PA
EMT	Uwchlan Ambulance Corps...	Exton, PA
Trophies & Awards	Kelly Cocke.....	Annandale, VA
	Meryleigh Bechtel.....	Chester Springs, PA



**BESTSAND™**

Equestrian Sand

manufactured  
by

**COVIA®**

# ALWAYS AHEAD OF THE PACK

Rely on uniform quality and firmness  
for superior arena footing with  
horse performance and safety  
being the top priority.



BESTSAND EQ is proud to be the sand of  
choice for the Ludwig's Corner Horse Show.

Contact us at  
1.800.243.9004 or  
[Sales@CoviaCorp.com](mailto:Sales@CoviaCorp.com)

## 2023 EXHIBITOR INFORMATION / RULES & REGULATIONS

**1. ENTRIES:** Pre-Entries are encouraged and close Thursday, August 24th at 9 pm.

ONLINE: [WWW.HORSESHOWING.COM](http://WWW.HORSESHOWING.COM)

or

EMAIL a completed blank as a PDF to [JackKate@aol.com](mailto:JackKate@aol.com).

or

MAIL a completed blank to Katie Benson

23 Brier Rd, Whitehouse Station, NJ 08889

After creating your online entry, please be sure to click "SUBMIT" to properly complete your entry to the show. [Horseshowing.com](http://Horseshowing.com) will send you an email confirmation of your entry. Post entries MAY be accepted until 5 PM Friday, September 1st, and will incur a \$30 post entry fee. No day of show walk-ins. The \$30 office fee is non-refundable and applies to all entries (Lead Line exempt). A \$20 Grounds/EMT fee applies to all entries.

**2. SHOW OFFICE:** will be open Friday before the show from 10:30 am to 5 pm, and reopens at 7:00 am each morning during the show. The show office closes promptly at 5 pm.

**3. DAY OF SHOW:** Entry forms must be accompanied in the show office with a current negative Coggins for each horse/pony. Entries can be paid by cash or check made payable to "LCHSA", but all entries MUST have a credit card on file for incidentals or classes that may be applied to your account after you check out. Entries paid by credit card must have a completed credit card authorization form on file. Checks must have a daytime phone number on them. Non-negotiable checks will be subject to a \$50 processing fee. Extra forms can be found on our website. **Day Of Show Phone: (908) 800-3135.**

**4. STABLING:** \$200 for the entire weekend. Stalls available at 12:00 noon, Friday September 1st. Reserve your stabling by August 18th via [HorseShowing.com](http://HorseShowing.com). All stalls must be paid for by August 18th, or will be released. No refunds on stalls for any reason. Stalls are 10'x10' with doors. See the stall reservation section below for more information.

**5. FEED/SHAVINGS:** Place your order directly through Pickering Valley Feed & Farm Store. Orders can be placed online at <https://www.pickeringvalleyfeed.com>. Please list the horse show address for delivery: 5 Nantmeal Road, Glenmoore, PA 19343.

**6. EXHIBITOR PARKING:** NO passenger cars are allowed in trailer parking. Please ensure all your tack and supplies are with the trailer before you leave for the show. Find a downloadable exhibitor parking pass on our website exhibitor information page and on [Horseshowing.com](http://Horseshowing.com). Place it on your vehicle dashboard, or keep on your phone to show at the main entrance. Wristbands will be available at the show office to wear for the entire weekend as an additional convenience for re-entry to the grounds.

**7. NUMBERS:** No numbers will be given out without full payment of entry fees, as well as all required signatures, and all other information clearly marked on the entry blank. A parent/guardian must sign the entry for their minor child. Trainers cannot sign for juniors. Incomplete or illegible entries will incur a post entry fee (i.e. please do not use "same" when completing entry).

**8. HOW MANY/RESULTS:** HorseShowing.com

**9. SCRATCH/ADDS:** No fee for scratch/adds, but must be done online by 5 pm the night before. Horses not properly scratched will forfeit their entry fee for that class. Horses not properly entered in a class will be charged double the entry fee for that class.

**10. REFUNDS:** No refund of entries that choose to scratch due to inclement weather. If a horse is injured or becomes ill prior to being shown in any class, the entry fee will be refunded by mail upon receipt of a veterinarian's certificate. Refunds will be mailed 30 days after the show. The non-refundable \$30 office fee per horse or equitation rider will be deducted from all refunded entries.

**11. SCHOOLING:** An open schooling afternoon is offered Friday, September 1st from 10:30 AM - 4:00 PM in the Rosato Oval, Ring 2 and Ring 3 at staggered start times. Please see the open schooling section for more information. Participants must complete an entry blank and credit card authorization form with the show office before entering the ring. Office fee applies. During the show, a blue/red warm up class replaces schooling breaks in the show rings unless otherwise noted on the schedule. Jumpers do one course walk before the division. Schooling will be permitted only in the areas provided by the committee.

**12. SHADE TENTS/CANOPIES:** No outside tents/canopies are to be erected around the competition rings, but are allowed by the trailers and stabling. A limited number of 10'x10' spaces above Ring 2 will be available for exhibitor families/barns to reserve. Reserve a shaded hillside tent box with a table and six chairs above Ring 2 for \$200 per day or \$500 for the weekend. Pitch your own canopy for \$50 per day. Pay for tent reservations via PayPal @LudwigsShow and include LAST NAME and DAY(S) to reserve your space. First come, first served. Canopies must be secured.

**13. PHOTOGRAPHY:** There is no official show photographer. Exhibitors are encouraged to book with our recommended photographers [Alyssa Murphree Media](#) and [Kelly Lemenze Photography](#) in advance, if they wish to have their classes professionally shot.

**14.** The Rosato Oval: 150'x 280' fiber GGT Footing™/sand footing. Ring 2: 120'x 250' sand/stone dust. Ring 3: 120'x220' sand/stone dust. Schooling Ring: 90'x170' sand/stone dust. Warm Up Ring 3: 120'x60'. Lunging/Flatting Area: 100'x100' grass.

**15.** Classes for juniors will be limited to riders who have not reached their 18th birthday prior to December 1st of 2022.

**16.** Prize money will be applied to the exhibitor's account. Any checks must be cashed within 30 days or they will not be honored. No refunds on prize money classes once the order of go has been established or division has started.

**17.** Hunter classes will be judged on performance and soundness. Any additional specifications will be noted. No martingales in under saddle classes.

**18.** Hunter courses may include verticals, brush, coops, oxers, post and rail, in and out, walls, log, gates; and will be posted at the in-gate at least one hour prior to each class.

**19.** Jumper courses may include verticals, oxers, panels, gates, spreads, and combinations. No liverpools.

**20.** Jumpers – all ties involving first place shall be jumped off. All ties for placings other

than first will be broken by first round time. The time allowed is based on 350 meter/minute for all jumper classes. No martingale restrictions when used in the conventional manner. See JP111.

**21.** Champion & Reserve Champion – based on points won in a section/division. 10, 6, 4, 2, 1, .5 points. A minimum of 3 classes must be held in the section/division. Grand Champions are calculated on total ribbons earned in qualifying classes/divisions. All winner awards, ribbons and prizes are courtesy of the Ludwig's Corner Horse Show Association unless otherwise noted. 8 ribbons per class unless otherwise noted.

**22.** Equitation: with sections offering two over fences classes, only the W/T/C \* will count towards the championship. Champion & Reserve Champion are awarded to the top two of the four riders that acquired the most points over fences. In addition to these points, only these four riders receive points for ribbons won in the designated flat class. In case of a tie score, the Championship and/or Reserve is awarded to the rider that accumulated the most points over fences.

**23.** Courses and Fences: Show management reserves the right to change the obstacles or vary the courses at their discretion, including use of dotted - mandatory line/courtesy circle. Fence heights are approximate.

**24.** Jump Order: Hunters will be determined at the gate, jumpers will be posted 1 hour prior. Jumper order of go is generated by computer in office. Derbies & Classics: In the event two horses ridden by same rider draw adjacent positions, they will be separated by minimum of four places and maximum of eight places depending on the number of horses entered in the class.

**25.** Conflicts will be handled at the gate. Under saddle classes are not considered a trainer conflict and will not be held. Please be ready for your class.

**26.** Show management reserves the right to cancel any class when in its judgment the entries are inadequate and to combine or divide any class or classes should the best interest of the show require it. Any division with 30 or more entries will be split.

**27.** If necessary to meet time schedule requirements, show management reserves the right to limit the number of entries accepted in each division or class. (First come, first served basis.) Also reserved is the right to move the location of classes, and adjust the time schedule if in the opinion of management circumstances dictate such changes.

**28.** Should a question or dispute arise not provided for in these rules, the same shall be referred to show management whose decision shall be final. LCHS conforms to the current USEF rulebook.

**29.** Exhibitors are notified that any discourtesy or disobedience to show officials, show staff, employees, committee members or show volunteers on the part of an owner, trainer, rider, groom, agent or family member shall disqualify the horse, and the owner shall forfeit his entry and other fees.

**30.** Exhibitors must be in proper riding attire for their class and wear ASTM/SEI approved protective headgear. No cell phone use/ear bud use while mounted in show or schooling rings, or while lunging.



**31.** DOGS must be on a leash.

**32.** The Ludwig's Corner Horse Show/Ludwig's Corner Horse Show Association/Foundation (LCHSA) will not be responsible for any loss, damage or illness that may occur and it shall be a condition of entry that each exhibitor/rider/driver/handler/coach and trainer, and his/her agent(s), guardian, or parent shall indemnify and hold the Ludwig's Corner Horse Show Association/Foundation; its directors, members, employees, volunteers ("released parties") harmless for any illness, loss, accident or injury which may occur to any owner, exhibitor, groom, attendant, spectator, animal or equipment at the show.

**33.** In the case of an incomplete entry blank by a rider, trainer, coach and/or parent, the first entrance into the ring as an exhibitor shall be construed as their acceptance of the rules & regulations of the competition and of LCHSA and shall make them subject to those rules & regulations.

**34.** LCHSA may use or assign photographs, videos, audios or other likeness of exhibitors and horses taken during the course of the competition for the ongoing promotion, coverage or benefit of the competition in 2023 or the future. All rights in connection with such use, including any claim to compensation, invasion of privacy, right of publicity, or to misappropriation are expressly and irrevocably waived.

**35.** Participants utilizing an online entry system for this competition do so with the agreement that they have read the official prize list & entry blank and agree to follow all class specifications, rules, requirements, regulations and conditions in the official prize list and on the entry blank.

**36.** Points can be earned with the following organizations at this show:

PHSA Regional Horse Shows: [www.pennhsa.org](http://www.pennhsa.org)

Princeton Equestrian League: [www.princetonequestrianleague.com](http://www.princetonequestrianleague.com)

Marshall & Sterling League: [www.HitsShows.com](http://www.HitsShows.com)

The Jockey Club TIP: [www.tjctip.com](http://www.tjctip.com)

International Side Saddle Organization: [www.sidesaddle.com](http://www.sidesaddle.com)

USHJA Outreach: [www.ushja.org](http://www.ushja.org)

## OFFICIAL HORSE SHOW HOTEL

### **Fairfield Inn Philadelphia/West Chester/Exton**

(610) 534-8811 \*Free breakfast\*

Free WiFi - Indoor Pool

5 North Pottstown Pike, Exton PA

**Fairfield**<sup>®</sup>  
BY MARRIOTT

*Call and ask for the horse show rate \$109 USD/night.*

# Fairfield<sup>®</sup>

BY MARRIOTT

# Likit<sup>™</sup>



## Seriously Fun Toys & Treats

likit.com



KELLY LEMENZE PHOTOGRAPHY

### EQUINE PORTRAIT & PRIVATE HORSE SHOW PHOTOGRAPHER

SERVING THE NJ EQUESTRIAN  
COMMUNITY & SURROUNDING AREAS

Inquire about booking your session at  
[www.KellyLemenzePhotography.com](http://www.KellyLemenzePhotography.com)



Mention this ad for **10% OFF** your first portrait or performance package!

## Metropolitan Communications, Inc.

### Ron Simpson

[rsimpson@mcsradio.com](mailto:rsimpson@mcsradio.com)

Chester County Office

**610-363-5858**

Delaware County Office

**610-874-7100**



**MOTOROLA**  
SOLUTIONS  
Channel Partner

**JVC**  
KENWOOD



**TRIPLE  
CROWN**

**BUY 15, GET \$30**  
**FREQUENT BUYER PROGRAM**

*Allyson Lagiovane*



Submit 15 proofs from participating products and receive a \$30 debit card! **LEARN MORE** at [triplecrownfeed.com/frequentbuyer](https://triplecrownfeed.com/frequentbuyer).

## **2023 SPONSORS & DONORS**

### **PLATINUM MEDAL**

The Rosato Family Foundations, H & K Group, Inc., Bentley Systems, Covia

### **SILVER MEDAL**

GGT Footing

### **BRONZE MEDAL**

A.J. Blosenski Trash and Recycling, California Closets, Goshen Hill, Triple Crown Nutrition, Stoltzfus RV and Marine, Precise Buildings, Metropolitan Communications, Lexus of Chester Springs, Fairfield Inn by Marriott

### **BLUE RIBBON PLUS**

Saratoga Horsecworks, Belfor Property Restoration

### **BLUE RIBBON**

Dover Saddlery, The Hankin Group, Weatherstone, Barbara Van Horn

### **T-SHIRT SPONSOR**

James A. Cochrane, Inc.

### **FENCE DONOR**

Pennsylvania Horse Shows Association, Unionville Equine, Pickering Valley Feed and Farm

### **ROUTE 100 BANNER SPONSOR**

California Closets

### **HILLSIDE BOXES**

The Berry Family, The Braendel Family, James A. Cochrane, Inc, Ludwig's Corner Fire Company, Lynne and Mel Cooksey, H & K Group, Katie and Marc Hembrough, The Rosato Family, Sunny and Alice Waters, Barbara Van Horn

### **DIVISION DONORS**

Blue Bridle Insurance, The Braendel Family

*\* List current at time of printing.*



## 2023 AWARDS & TROPHY TENT DONOR/SPONSORS

*Thank you to the following for their support of the show:*

A&E Show Stables/Wilhelmina Horzepa LLC  
AniCell Biotech  
Austin K. Kunsman  
Belle & Bow Equestrian  
Bryn Taran Farm  
David & Monica Dietz  
Donna Rubin  
Equine Exchange  
Locust Ridge Farm  
Margi Watters  
Martin Blumenthal  
Mr. & Mrs. Ken Silverwood  
Oak & Maple Equestrian, LLC  
Patricia O'Shea  
Point Made - Custom Shadbelly Points & Embroidery  
Rachael Tennyson & Greylyn Farm  
Ray & Gwen Shelling  
Somerset Nursery  
Sue Hoke  
The Cocke Family  
The McEvoy Family  
Windswept Acres

*\* List current at time of printing.*

## 2023 SPECIAL AWARDS

SAT.

BEST CHILD RIDER\* – based on the judge's decision in Ring 3  
*Sponsored by Ray & Gwen Shelling, Coatesville*

GRAND CHAMPION SHORT STIRRUP – given to the high point rider in classes 130 – 140  
*Sponsored by Ray & Gwen Shelling, Coatesville*

SUNDAY

BEST CHILD RIDER ON A PONY\* – based on the judge's decision in Ring 2.  
*Sponsored by Ray & Gwen Shelling, Coatesville*

BEST CHILD RIDER ON A HORSE\* – the Dorothy Corrado Memorial Trophy based on the judge's decision in The Rosato Oval  
*Sponsored by Ray & Gwen Shelling, Coatesville*

BEST ADULT RIDER – The Best Adult Rider Trophy presented to the high point rider in Adult Equitation classes in Ring 2.  
*Sponsored by Patricia O'Shea, West Chester*

HUNTER PONY STYLE AWARD – presented to the pony whose style most exemplifies a show hunter based on form, movement and way of going, as decided by the judge in Ring 2.  
*Sponsored by The Horse Show*

HUNTER HORSE STYLE AWARD – presented to the horse whose style most exemplifies a show hunter based on form, movement and way of going, as decided by the judge in the Rosato Oval.  
*Sponsored by Mr. & Mrs. Ken Silverwood, Chester Springs*

GRAND HUNTER HORSE – The DunnHill Farm "Olivia" Memorial Trophy presented to the high point Hunter Horse on Sunday.  
*Sponsored by Donna Rubin, Chester Springs*  
*Prizes courtesy of Saratoga Horseworks*

GRAND HUNTER PONY – The Grand Hunter Pony Trophy presented to the high point Hunter Pony on Sunday.  
*Sponsored by Bryn Taran Farm, Spring City*  
*Prizes courtesy of Saratoga Horseworks*

(Continued on next page.)

MONDAY

**JUMPER STYLE AWARD** – presented to the horse whose style best exemplifies a show jumper based on scope, rideability, technique and competitive spirit as decided by the judge in The Rosato Oval.  
*Sponsored by A&E Show Stables/Wilhelmina Horzepa LLC, Robbinsville*

**PONY JUMPER STYLE AWARD** – presented to the rider who exhibits the best classical jumper style of riding throughout the Pony Jumper division as decided by the judge in Ring 3.  
*Sponsored by The Horse Show*

**GRAND YOUNG HUNTER** – the Rainbow's End Farm Perpetual Trophy presented to the high point horse or pony in classes 315, 316, 320 - 325  
*Sponsored by Bryn Taran Farm, Spring City*

**LEADING TRAINER** – presented to an established professional whose program promotes skill, education, advancement & good sportsmanship throughout the show.  
*Sponsored by AniCell Biotech*

**EMERGING TRAINER** – presented to a young professional who shows skill and desire, while educating and advancing their students on the sport while at the show.  
*Sponsored by AniCell Biotech*



**Thoroughbred  
Incentive Program**



Servicing Chester, Delaware, Berks and Lancaster counties  
610-942-9866  
[vets@allianceequinehealth.com](mailto:vets@allianceequinehealth.com)

**#1 JEFF D'AMBROSIO**  
DESTINATION DOWNTOWN



INTRODUCING THE AWARD-WINNING

# RAM 1500 4X4 PICK-UP



**OVER 400 RAM TRUCKS ALWAYS AVAILABLE!**

**SUPPORT THE DEALER THAT SUPPORTS YOU!**

**#1 JEFF D'AMBROSIO**  
DESTINATION DOWNTOWN



1221 E. Lancaster Ave, Downingtown, PA • 610-269-9500

[www.GoJeffAuto.com](http://www.GoJeffAuto.com)





# Apex Arenas LLC

YOUR PROJECT OUR SOLUTIONS

*“Great footing is our goal.”*

## **SERVICES**

Arena construction

Arena maintenance

Dust-free footing

Irrigation

**603.748.1027**

23200 HOWARD CHAPEL RD., BROOKEVILLE, MD

# HUNTER SPECIFICATIONS

*All classes \$30 unless otherwise noted*

## **BLUE/RED WARM UP, \$25 per round**

THE ROSATO OVAL: Saturday: Class #1      Sunday: Class #3

RING 2:      Sunday: Class #4      Monday: Class #6

RING 3:      Saturday: Class #2      Sunday: Class #5

Blue score 76 and above. Red score 70–75. Ribbon awarded for first trip only.

An open card/warm up run with division over fences - will not be run during the Derbies. Horse can be ridden by amateur, junior or professional. Please check in with your respective In-Gate. One trip only.

## **THE JOCKEY CLUB TIP HUNTERS**

Open to Thoroughbreds registered with The Jockey Club Thoroughbred Incentive Program. Judged on manners, pace and way of going. Simple lead changes not penalized. Ribbons, Prize Money & Awards courtesy of TIP unless otherwise noted. Horse's TIP number must be on the entry blank to be considered for any TIP High Point awards.

*Presented by Triple Crown Nutrition, Mohnton PA*

## **TIP BEGINNER THOROUGHBRED HUNTER**

Fences 2' Trotting jumps not to be penalized.

Class #106      Beginner Thoroughbred Hunter Over Fences

Class #107      Beginner Thoroughbred Hunter Over Fences

Class #108      Beginner Thoroughbred Hunter Under Saddle

## **TIP LOW THOROUGHBRED HUNTER**

Fences up to 2'6"

Class #109      Low Thoroughbred Hunter Over Fences  
(\*1st round of the TIP Hunter Classic)

Class #110      Low Thoroughbred Handy Hunter

Class #112      Low Thoroughbred Hunter Under Saddle

## **\$100 TIP HUNTER CLASSIC, \$40**

To be judged on manners, way of going and style of jumping. Scoring of the two rounds\* will be cumulative. Fences 2'6".

Class #111      \$40    \$30    \$20    \$10

## **TIP THOROUGHBRED HUNTER**

Fences 2'9"

Class #113      Thoroughbred Hunter Over Fences

Class #114      Thoroughbred Hunter Over Fences

Class #115      Thoroughbred Hunter Handy

Class #116      Thoroughbred Hunter Under Saddle

## **THE FAMILY CLASS, \$45 per family**

*The Elizabeth P. Mulhern Memorial Trophy*

Open to members of the same family - two or more riders. Judged on performance and unity as a group. Shown at the walk and trot both directions of the ring. Please enter under family name. Same day entries accepted. 4 Sets of 8 Ribbons. Class #117

# HUNTER SPECIFICATIONS

*All classes \$30 unless otherwise noted*

## SIDE SADDLE

Class #118 Side Saddle Under Saddle

*The Ladies Side Saddle Challenge Trophy.*

Open to all horses and ponies. Juniors may ride. To be shown at a walk, trot and canter both ways of the ring in formal hunting attire with appointments. To be judged on performance and soundness with emphasis on manners 75%; formal hunting attire, appointments and general overall appearance of horse and rider 25%.

Class #119 Side Saddle Over Fences

To be judged on performance, manners and way of going. Fences 2'6"

Class #120 Side Saddle Hunter Hack

To be judged on performance and soundness with an emphasis on manners. Under saddle performance to count 50% and over fences performance to count 50%. To jump two fences at 2'6"

## FOX HUNTER

Open to all horses & ponies that have hunted this past season. Please indicate the Hunt affiliation on your entry form. Need not be MFHA. To be judged on the proper hunt turnout of horse and rider, the way of going over natural type fences reminiscent of the hunt field, manners, safety, boldness, handiness and overall brilliance of the round. May be asked to gallop, hold hard, dismount, and/or strap over a fence. Formal or Ratcatcher attire. Proper hunt appointments are encouraged. Trotting in corners permitted. Fences 2'6" with a high option of 2'9"

Class #121 Fox Hunter Over Fences

Class #122 \$100 Fox Hunter Handy Stake (\$40 \$30 \$20 \$10)

*Ribbons sponsored by The Cocke Family*

Class #123 Fox Hunter Under Saddle

## HUNT TEAMS, \$65 per team

Teams of three. Shown over a course in the ring one to follow the other at a safe hunting distance. The final fence to be jumped abreast. Judged on performance, suitability, manners, uniformity and appearance as a team. Teams may crack their whips. Same day entries accepted. Fences 2'6" 3 Sets of 8 Ribbons.

Class #124

## SHORT STIRRUP HUNTER

Open to riders 12 years and under on horses & ponies. Riders may cross enter into Short Stirrup Equitation only. Fences 18"

Class #145 Short Stirrup Hunter Over Fences

Class #146 Short Stirrup Hunter Over Fences

Class #147 Short Stirrup Hunter Under Saddle

# HUNTER SPECIFICATIONS

*All classes \$30 unless otherwise noted*

## PLEASURE PONY

Open to ponies ridden by juniors. Judged on manners & suitability. Way of going will be considered. Fences under 2' Bridle Path Hack to be shown at a walk, trot, canter and hand gallop. To back easily and stand quietly.

- Class #148      Pleasure Pony Walk, Trot
- Class #149      Pleasure Pony Walk, Trot, Canter
- Class #150      Pleasure Pony Bridle Path Hack
- Class #151      Pleasure Pony Over Fences

## OUTREACH LOCAL HUNTER

USHJA Outreach points. Open to any horse or pony stabled within a 30 mile radius of Ludwig's Corner. Fences 2'6" - 2'9".

- Class #173      Outreach Local Hunter Over Fences
- Class #174      Outreach Local Hunter Over Fences
- Class #175      Outreach Local Hunter Handy
- Class #176      Outreach Local Hunter Under Saddle

## LCHSA LOW HUNTER

Open to all horses and ponies to be ridden by juniors, adults, or professionals. Fences 2'3".

- Class #152      LCHSA Low Hunter Over Fences
- Class #153      LCHSA Low Hunter Over Fences
- Class #154      LCHSA Low Hunter Under Saddle

## DERBY WARM UP, \$15

Ticketed warm up for the Hunter Derby and Pony Hunter Derby.  
Class #7



## ALYSSA MURPHREE MEDIA

- ◆ Equine Photography
- ◆ Marketing
- ◆ Media Services

Book guaranteed professional photo coverage of your rides at Ludwig's and view show photos at:

[www.allysamurphreemedia.com](http://www.allysamurphreemedia.com)





# HUNTER SPECIFICATIONS

*All classes \$30 unless otherwise noted*

## LCHSA PONY HUNTER DERBY

Order of go will be posted one hour prior to the start of the class. Once the order of go has been posted, there will be no adds or scratches. Entry fee due by 5 PM Saturday. Prize money distributed: 1st-30% 2nd-22% 3rd-13% 4th-8% 5th-6% 6th-5% 7th-4% 8th-3% 9th-3% 10th-2% 11th-2% 12th-2%

### **\$2500 LCHSA PONY HUNTER DERBY - Hunt and Go format, \$125**

*Presented by Somerset Nursery, Glenmoore*

*Prizes courtesy of Saratoga Horsecworks and Locust Ridge Farm*

Open to all ponies ridden by juniors. Fences 2'3" for S/M ponies, 2'6" for L ponies - with a high option(s). This format consists of two phases, jumped consecutively. Competitors will jump the first 7 fences as a Classic Hunter round with a high option(s). Ponies stay in, pick up their pace and pass through a set of markers to begin their Handy portion of the class. The Handy Hunter round, consisting of 5-8 fences with a high option(s); with pace, brilliance, and a shorter track to be rewarded. Class is limited to 25 entries. 12 entries to fill, or it becomes a sweepstakes class. Formal attire suggested. 12 Ribbons. Prizes and neck sashes for 1st & 2nd place ponies. Class #202

## **LOW HUNTER**

*The Catch 22 Perpetual Trophy*

*Ribbons sponsored by Blue Bridle Insurance*

Open to all horses. Fences 2'9"

Class #203      Low Hunter Over Fences

Class #204      Low Hunter Over Fences

Class #205      Low Hunter Under Saddle

## **CHILDREN'S HUNTER HORSE**

*Ribbons sponsored by Point Made - Custom Shadbelly Points & Embroidery*

Open to all horses, ridden by juniors. May not cross enter in Low Children's Division. Fences 3'0".

Class #207      Children's Hunter Horse Over Fences

Class #208      Children's Hunter Horse Over Fences

Class #209      Children's Hunter Horse Under Saddle

## **ADULT AMATEUR HUNTER**

*The Barbara Mannis Memorial Perpetual Trophy*

*Ribbons sponsored by Margi Watters, Chester Springs*

Open to all horses, ridden by amateur adults. Fences 3'0". May not cross enter into Low Adult Hunter Division.

Class #212      Adult Amateur Hunter Over Fences

Class #213      Adult Amateur Hunter Over Fences

Class #214      Adult Amateur Hunter Under Saddle

# HUNTER SPECIFICATIONS

*All classes \$30 unless otherwise noted*

## LCHSA HUNTER DERBY

Order of go will be posted one hour prior to the start of the class. Once the order of go has been posted, there will be no adds or scratches. Entry fee due by 7:30 AM. Prize money distributed: 1st-30% 2nd-22% 3rd-13% 4th-8% 5th-6% 6th-5% 7th-4% 8th-3% 9th-3% 10th-2% 11th-2% 12th-2%

### \$5,000 LCHSA HUNTER DERBY, \$200

*Presented by The Rosato Family Foundation*

*Ribbons sponsored by Rachael Tennyson & Greylyn Farm, West Chester*

*Prizes courtesy of Saratoga Horseworks and Sue Hoke*

Open to all riders on horses. Fences 3'0" with a 3'3" high option. Competitors will jump one round over a course of 10 - 12 jumps. 12 entrants with the highest scores will return for a second round over an altered course. Class is limited to 40 entries. 12 entries to fill, or it becomes a sweepstakes class. Formal attire requested. 12 Ribbons. Prizes and neck sashes for 1st & 2nd place horses.

Class #201

### CHILDREN'S HUNTER PONY MODEL

Open to all ponies. Model points not to count towards the division. To be shown in hand and judged on handling and presentation only. Will be asked to jog.

Class #219

### CHILDREN'S HUNTER PONY SMALL/MEDIUM

*The David W. Wilson Memorial Trophy*

Open to all Small/Medium ponies, ridden by juniors. May not cross enter into Low Children's Hunter division. Fences 2'

Class #221 Children's Hunter Pony S/M Over Fences

Class #222 Children's Hunter Pony S/M Over Fences

Class #223 Children's Hunter Pony S/M Under Saddle

### CHILDREN'S HUNTER PONY LARGE

*The David W. Wilson Memorial Trophy*

Open to all Large ponies, ridden by juniors. May not cross enter into Low Children's Hunter Division. Fences 2'6.

Class #224 Children's Hunter L Pony Over Fences

Class #225 Children's Hunter L Pony Over Fences

Class #226 Children's Hunter L Pony Under Saddle

### LOW ADULT HUNTER

Open to all horses ridden by amateur adults. May not cross enter into Adult Amateur Division. Fences 2'6".

Class #232 Low Adult Hunter Over Fences

Class #233 Low Adult Hunter Over Fences

Class #234 Low Adult Hunter Under Saddle

# HUNTER SPECIFICATIONS

*All classes \$30 unless otherwise noted*

## NOVICE HUNTER

Open to horses, which have not won more than three (3) blue ribbons over fences at any horse show prior to Dec. 1, previous year. Fences 2'6".

- Class #235 Novice Hunter Over Fences
- Class #236 Novice Hunter Over Fences
- Class #237 Novice Hunter Under Saddle

## LOW CHILDREN'S HUNTER PONY

Open to ponies to be ridden by juniors. May not cross enter into regular Children's Hunter Division. Fences 2'0".

- Class #238 Low Children's Hunter Pony Over Fences
- Class #239 Low Children's Hunter Pony Over Fences
- Class #240 Low Children's Hunter Pony Over Fences
- Class #241 Low Children's Hunter Pony Under Saddle

## MELVIN DUTTON HUNTERS

Open to juniors and adult amateurs on horses and ponies. Fences 2'3".

- Class #242 Melvin Dutton Hunters Over Fences
- Class #243 Melvin Dutton Hunters Over Fences
- Class #244 Melvin Dutton Hunters Handy
- Class #245 Melvin Dutton Hunters Under Saddle

## PLEASURE HORSE

Open to all. Judged on manners & suitability. Fences 2' 6". Bridle path hack to be shown at a walk, trot, canter and hand gallop. To back easily and stand quietly.

- Class #246 Pleasure Horse Walk, Trot, Canter
- Class #247 Pleasure Horse Bridle Path Hack
- Class #248 Pleasure Horse Over Fences

## LOW CHILDREN'S HUNTER HORSE

*Division sponsored by The Braendel Family*

*Ribbons sponsored by The Braendel Family*

Open to horses ridden by juniors. May not cross enter into Children's Hunter Division. Fences 2'6".

- Class #249 Low Children's Hunter Horse Over Fences
- Class #250 Low Children's Hunter Horse Over Fences
- Class #251 Low Children's Hunter Horse Over Fences
- Class #252 Low Children's Hunter Horse Under Saddle

## LCHSA YOUNG HUNTER UNDER SADDLE

Open to horses and ponies five years and under, suitable to become hunters. To be judged at a walk, trot and canter both directions of the ring. Conformation - 50%; performance, soundness, manners and way of going - 50%. Horses/Ponies may be stripped for conformation.

- Class #315 Horses
- Class #316 Ponies

# HUNTER SPECIFICATIONS

*All classes \$30 unless otherwise noted*

## **JUNIOR HANDLER**

Horse or pony to be shown in hand and moved on the line by a junior. To be judged on presentation of the animal to the judge, neatness and appearance of the handler, and the overall condition of the animal. Conformation will not be a determining factor. To be jogged before being moved to the line in order of preference.

Class #317

## **AMATEUR HANDLER**

Horse or pony to be shown in hand and moved on the line by an amateur adult. To be judged on presentation of the animal to the judge, neatness and appearance of the handler, and the overall condition of the animal. Conformation will not be a determining factor. To be jogged before being moved to the line in order of preference.

Class #318

## **YOUNG HUNTER**

Open to horses and ponies (7) years and under, in their first or second year of showing. Trotting corners will not be penalized. Fences at 2'3" for ponies, 2'6" for horses. Adults may ride ponies.

### **PROFESSIONAL TO RIDE**

Class #319 Young Hunter Over Fences

Class #320 Young Hunter Over Fences

Class #321 Young Hunter Under Saddle

### **JUNIOR/AMATEUR TO RIDE**

Class #322 Young Hunter Over Fences

Class #323 Young Hunter Over Fences

Class #324 Young Hunter Under Saddle

## **LCHSA SMALL HUNTER**

Open to any horse over 14.2 hands and not to exceed 16 hands. Fences at 2'6".

Class #325 Small Hunter Over Fences

Class #326 Small Hunter Over Fences

Class #327 Small Hunter Handy

Class #328 Small Hunter Under Saddle



# SARATOGA HORSEWORKS

Proud Sponsor Of The Ludwig's Corner Horse Show



*Celebrating 35 Years Of Exceptional  
Horse Clothing & Accessories*

Horseworks.com

@SaratogaHorseworks



# JUMPER SPECIFICATIONS

*All classes \$35 unless otherwise noted*

## LOW CHILD/ADULT AMATEUR JUMPER

Open to horses & ponies ridden by juniors and amateur adults. Adults may ride ponies. Fences .85m

Class #301 Low Child/Adult Jumper \* Table II, Sec. 2b

Class #302 Low Child/Adult Jumper \* Table II, Sec. 1

## CHILD /ADULT AMATEUR JUMPER

Open to horses and ponies ridden by juniors and amateur adults. Adults may ride ponies. Fences 1.05m.

Class #303 Child/Adult Jumper \* Table II, Sec. 2c

Class #304 Child/Adult Jumper \* Table II, Sec. 1

## \$1,500 MARSHALL & STERLING CHILD/ADULT JUMPER CLASSIC, \$120

*The Craig L. Kunsman Memorial Perpetual Trophy*

*Presented by Lexus of Chester Springs*

*Ribbons sponsored by Austin K. Kunsman*

Open to juniors and amateur adults. Horses must have entered one of the following classes: 303, 304. Points count towards Ch/Ad Jumper division champion. Fences 1.10m with spreads to 1.10m. Table II, Sec. 2b. Class is limited to 30 entries. 15 entries to fill, or it becomes a sweepstakes class. Proper Jumper attire.

\$375 \$225 \$195 \$180 \$150 \$135 \$120 \$120

Class #305

## \$750 LCHSA JUMPER SPEED STAKE, \$75

Open to all horses and ponies. Fences 1.10m

Class #306 LCHSA Jumper Speed Stake \* Table II, Sec. 1

\$225 \$165 \$110 \$100 \$75 \$75



Belle & Bow  
EQUESTRIAN

# JUMPER SPECIFICATIONS

*All classes \$35 unless otherwise noted*

## **\$500 LCHSA JUMPER STAKE, \$75**

Open to all horses and ponies. Fences 1.15m

Class #307 LCHSA Jumper Stake • Table II, Sec. 2c

\$100 \$90 \$80 \$80 \$75 \$75

## **\$10,000 LCHSA JUMPER CLASSIC MINI-PRIX, \$300**

*The Kimberton Hills Farm Perpetual Trophy*

*Ribbons sponsored by Rachael Tennyson & Greylyn Farm, West Chester*

*Prizes courtesy of Saratoga Horsecworks*

Shown over 10 to 14 jumps at 1.25m with spreads of 1.25m. Table II, Sec. 2a. To be eligible, horses must have entered in one of the following 301, 302, 303, 304, 305, 306, 307. Class is limited to 30 entries. 15 entries to fill or it becomes a sweepstakes. Formal jumper attire. Drawing of the order will occur 5 PM day prior. Horses scratched after the drawing of the order will incur a \$100 scratch fee. Vet scratch exempt from Mini-Prix scratch fee.

\$2500 \$1800 \$1400 \$1000 \$800 \$700 \$600 \$500 \$400 \$300

10 ribbons. Prizes and neck sashes for 1st & 2nd place horses.

Class #308



Retail & Resale – Everything You Need in One Place!

1251 Ridge Road (rt. 23)  
Pottstown, PA 19465

**610-469-0111**

Store Hours

Mon & Sat: 10am - 5pm

Wed, Thu, Fri: 10am - 6pm

Sun: 11am - 4pm

Tue: CLOSED



Helmets, Bridles, Tack, Grooming and More!



Everything for the Rider, Horse, & Farm  
Plus Our Bargain Barn

equineexchangestore.com

Sign Up Today for Our Rewards  
Program and Order Online



## **You Can Expect Great Service & Selection**

We carry everything from seasonal,  
perennial, and annual plants to  
trees, stones, mulch, and more.



**610.469.7500**

1697 Pottstown Pike • Glenmoore, PA 19343

SomersetNurseryPA.com



# JUMPER SPECIFICATIONS

*All classes \$35 unless otherwise noted*

## LOW SCHOOLING JUMPER

Open to all horses and ponies. Fences 0.75m.

Class #309 Low Schooling Jumper \* Table II, Sec. 2c

Class #310 Low Schooling Jumper \* Table II, Sec. 1

Class #311 \$250 Low Schooling Jumper Stake \* Table II, Sec. 2b

\$100 \$75 \$50 \$25

## OUTREACH HIGH SCHOOLING JUMPER

USHJA Outreach points. Open to all horses and ponies. Fences 0.90m -.95m.

Class #312 Outreach High Schooling Jumper \* Table II, Sec. 2c

Class #313 Outreach High Schooling Jumper \* Table II, Sec. 1

Class #314 \$250 Outreach High Schooling Jumper Stake \* Table II, Sec. 2b

*Ribbons sponsored by David & Monica Dietz*

\$100 \$75 \$50 \$25

## ITTY BITTY JUMPER

Open to horses and ponies. Fences .65m.

Class #329 Itty Bitty Jumper • Table II, Sec. 2c

Class #330 Itty Bitty Jumper • Table II, Sec 1

Class #331 \$100 Itty Bitty Jumper Stake • Table II, Sec. 2b

\$40 \$30 \$20 \$10

## PONY JUMPER

Open to all ponies. Fences .80m.

Class #332 Pony Jumper • Table II, Sec.2c

Class #333 Pony Jumper • Table II, Sec. 1

Class #334 \$100 Pony Jumper Stake • Table II, Sec. 2b

*Sponsored by Anne Walton, Philadelphia*

\$40 \$30 \$20 \$10

## HOPEFUL JUMPER

Open to horses and ponies who are not showing in jumper classes at this show with fences starting at 1.0m or higher. Fences .85m.

Class #335 Hopeful Jumper • Table II, Sec. 2c

Class #336 Hopeful Jumper • Table II, Sec. 1

Class #337 \$100 Hopeful Jumper Stake • Table II, Sec. 2b

*Sponsored by Martin Blumenthal IMO Joyce Blumenthal*

\$40 \$30 \$20 \$10

## THE JOCKEY CLUB TIP JUMPERS

Open to Thoroughbreds registered with The Jockey Club Thoroughbred Incentive Program. Ribbons and Awards courtesy of TIP unless otherwise noted. Horse's TIP number must be on the entry blank to be considered for any TIP High Point awards.

# JUMPER SPECIFICATIONS

*All classes \$35 unless otherwise noted*

*Presented by Triple Crown Nutrition, Mohnton*

## TIP LOW JUMPER

Fences .75 m

Class #338 TIP Low Jumper \* Table II, Sec. 2c

Class #339 TIP Low Jumper \* Table II, Sec. 1

Class #340 \$100 TIP Low Jumper Stake \* Table II, Sec. 2b

*Ribbons sponsored by Windswept Acres, Oley*

\$40 \$30 \$20 \$10

## TIP HIGH JUMPER

Fences .85m

Class #341 TIP High Jumper \* Table II, Sec. 2c

Class #342 TIP High Jumper \* Table II, Sec. 1

## \$100 TIP JUMPER CLASSIC, \$40 entry fee

Fences .85m Horses that competed in at least one TIP Jumper class are eligible to compete. Table II, Sec. 2b

\$40 \$30 \$20 \$10

Class #343

## JUMP HEIGHT CONVERSIONS METER TO FEET

0.70m – 2'3"

0.95m – 3'1"

1.20m – 3'11"

0.75m – 2'5"

1.00m – 3'3"

1.25m – 4'1"

0.80m – 2'7"

1.05m – 3'5"

1.30m – 4'3"

0.85m – 2'9"

1.10m – 3'7"

1.35m – 4'5"

0.90m – 2'11"

1.15m – 3'9"

1.40m – 4'7"

## JUMPER TABLES

Table II.1 Time First Round/Speed Class

Table II.2a Time First Jump Off, all clean rounds to jump off after all first rounds are completed.

Table II.2b Time First Jump Off, all clean rounds stay in the ring and jump off immediately.

Table II.2c Power & Speed



Pennsylvania Horse Shows Association

Dover Saddlery®  
is a proud sponsor of the  
Ludwig's Corner Horse Show  
*Best of luck to all competitors.*



**DOVER**  
SADDLERY®

DoverSaddlery.com | 302-234-8047

Visit our store in Hockessin, DE  
at 683 Yorklyn Road



# EQUITATION SPECIFICATIONS

*All classes \$30 unless otherwise noted*

## **LEAD LINE, \$25 per class**

*Younger Prizes courtesy of A&E Show Stables/Wilhelmina Horzepa LLC, Robbinsville  
Older Prizes courtesy of Ray & Gwen Shelling, Coatesville*

Open to children who have not reached their 3rd or 6th birthday as of Dec. 1 of the preceding year. Younger: 3 Years & Under. Older: 4-6 Years. May cross enter LCHSA Mini-Stirrup and Shortest Stirrup EQ only. Open to English and Western riders. Ribbons to all.

Class #101	Lead Line Younger Walk
Class #102	Lead Line Younger Walk,Trot
Class #103	Lead Line Older Walk
Class #104	Lead Line Older Walk,Trot
Class #105	Lead Line Older Off Lead

## **LCHSA MINI-STIRRUP, \$25 per class**

Open to children 8 years old & under. May enter other flat classes only.

Class #133	Mini-Stirrup Walk EQ
Class #134	Mini-Stirrup Walk/Trot EQ
Class #135	Mini-Stirrup Walk/Trot Pleasure
Class #136	Mini-Stirrup EQ Figure 8

## **SHORTEST STIRRUP EQUITATION, \$25 per class**

Open to children 10 years old & under. May cross enter into Short Stirrup Equitation. May not ride in any other division with fences higher than 2'3".

Class #137	Shortest Stirrup EQ Walk
Class #138	Shortest Stirrup EQ Walk, Trot
Class #139	Shortest Stirrup EQ Walk, Trot, Canter
Class #140	Shortest Stirrup EQ 4 Cross-rails

## **SHORT STIRRUP EQUITATION, \$25 per class**

Open to riders 12 years old & under. Fences 18". May cross enter other divisions.

Class #141	Short Stirrup EQ Walk, Trot
Class #142	Short Stirrup EQ Walk, Trot, Canter
Class #144	Short Stirrup EQ Over Fences

## **JUNIOR BEGINNER EQUITATION**

Open to junior riders in their first or second year of showing. Fences 2'

Class #125	Jr. Beginner EQ Walk, Trot
Class #126	Jr. Beginner EQ Walk, Trot, Canter*
Class #127	Jr. Beginner EQ Over 4 Fences
Class #128	Jr. Beginner EQ Over 8 Fences

## **ADULT BEGINNER EQUITATION**

Open to adult riders in their first or second year of showing. Fences 2'

Class #129	Adult Beginner EQ Walk, Trot
Class #130	Adult Beginner EQ Walk, Trot, Canter*
Class #131	Adult Beginner EQ Over 4 Fences
Class #132	Adult Beginner EQ Over 8 Fences

# EQUITATION SPECIFICATIONS

*All classes \$30 unless otherwise noted*

## NOVICE EQUITATION

*The Kathleen F. Shine Memorial Trophy*

Open to Junior and Adult riders who have not won six (6) blue ribbons in equitation classes over fences previous year. Beginner Rider ribbons not to count. Fences 2' - 2'3" for ponies and 2'6" for horses.

Class #155	Novice Equitation Walk, Trot
Class #156	Novice Equitation Walk, Trot, Canter*
Class #157	Novice Equitation Over Fences
Class #158	Novice Equitation Over Fences

## YOUNG RIDERS

A horsemanship class for junior riders 13 & under. Fences 18" – 2'

Class #159	Young Riders O/F
Class #160	Young Riders O/F
Class #161	Young Riders U/S

## 13 & UNDER EQUITATION

*The Willowstone Trophy*

Open to horses and ponies to be ridden by junior riders 13 & under. Fences: 2' – 2'3" for ponies and 2' 6" for horses.

Class #162	13 & Under Equitation Walk, Trot
Class #163	13 & Under Equitation Walk, Trot, Canter*
Class #164	13 & Under Equitation Over Fences
Class #165	13 & Under Equitation Over Fences

## 14-17 EQUITATION

*The Willowstone II Trophy*

Open to horses and ponies to be ridden by junior riders 14-17. Fences: 2' – 2'3" for ponies and 2'6" for horses.

Class #166	14-17 Equitation Walk, Trot
Class #167	14-17 Equitation Walk, Trot, Canter*
Class #168	14-17 Equitation Over Fences
Class #169	14-17 Equitation Over Fences

## LONG STIRRUP

Open to all amateur riders over 18 years of age. Judged on horsemanship. Fences no higher than 2'3".

Class #215	Long Stirrup Walk, Trot
Class #216	Long Stirrup Walk, Trot, Canter*
Class #217	Long Stirrup Hunter Over Fences
Class #218	Long Stirrup Medal Over Fences

## LOW ADULT EQUITATION

Open to adult amateur riders. Fences 2'6".

Class #227	Low Adult Equitation Walk, Trot
Class #228	Low Adult Equitation Walk, Trot, Canter
Class #230	Low Adult Equitation Over Fences

# EQUITATION SPECIFICATIONS

*All classes \$30 unless otherwise noted*

## **LCHSA PONY FLAT MEDAL**

Open to junior riders. To be shown at a walk, trot and canter both ways of the ring. Special tests may be given at the judge's discretion.  
Class #171

## **LCHSA HORSE FLAT MEDAL**

Open to junior riders. To be shown at a walk, trot and canter both ways of the ring. Special tests may be given at the judge's discretion.  
Class #170

## **LCHSA ADULT FLAT MEDAL**

Open to adult amateur riders. To be shown at a walk, trot and canter both ways of the ring. Special tests may be given at the judge's discretion.  
Class #229

## **LCHSA MINI MEDAL, \$25**

Open to juniors competing in Short Stirrup, Junior Beginner EQ, Novice EQ and Pleasure Pony. A simple course of fences not to exceed 2'  
Class #143

## **MARSHALL & STERLING CHILDREN'S PONY MEDAL, \$35**

Open to juniors. To be shown over a minimum of 8 fences with at least two changes of direction after the first fence. A combination is optional, and must be adjusted according to fence heights. Two or more tests of the top four competitors are required. Fences: 2' for S/M ponies, 2'6" for L ponies.  
Class #220

## **MARSHALL & STERLING LOW CHILDREN'S MEDAL, \$35**

Open to juniors on horses. To be shown over a minimum of 8 fences including a combination and at least 2 changes of direction after the first fence. Two or more tests of the top four competitors are required. Fences 2'6".  
Class #172

## **M&S PYRANHA™ CHILDREN'S HORSE MEDAL, \$35**

Open to junior riders. To be shown over a minimum of eight fences including a combination and at least 2 changes of direction after the first fence. Two or more tests of the top four competitors are required. Fences 3'.  
Class #206

## **MARSHALL & STERLING LOW ADULT MEDAL, \$35**

Open to amateur adults. To be shown over a minimum of 8 fences including a combination and at least 2 changes of direction after the first fence. Two or more tests of the top four competitors are required. Fences 2'6".  
Class #231

## **M&S DOVER SADDLERY ADULT MEDAL, \$35**

*Ribbons sponsored by Margi Watters, Chester Springs*

Open to adult amateur riders, to be shown over a minimum of 8 fences including a combination and at least two changes of direction after the first fence. Two or more tests of the top four competitors are required. Fences 3'0".  
Class #210

# EQUITATION SPECIFICATIONS

*All classes \$30 unless otherwise noted*

## **DORIS MACDONALD PHSA JUNIOR & AMATEUR MEDAL, \$35**

Open to juniors and amateurs on horses only. To be shown over a minimum of 8 fences including at least one oxer, two changes of direction, and one of the following: a bending line, a narrow jump, a roll back turn, a fence at the end of the ring, a long approach to a single fence or a combination. Two or more USEF Test 1-19 required Fences 3'0". Juniors and amateurs can be combined at the same show but points will count separately for Finals qualification. \*Horse/Rider/Owner must all be current PHSA members.

Class #211

## **OPEN SCHOOLING**

**FRIDAY, SEPTEMBER 1ST | 10:30 AM - 4:00 PM**

**\$30 per horse/pony**

**All rings (NEW FOR 2023)**

**Class #10**

Enter online at [HorseShowing.com](https://HorseShowing.com) or turn in a completed 2023 entry blank and credit card authorization form at the office. Participants must check-in at the show office prior to schooling. Rider back numbers must be worn in the ring at all times. The \$30 office fee show applies to open schooling entries. Rings will open for schooling according to the staggered time schedule below. Please bring a grounds person to help you with your rails.

Ring 2: Opens at 10:30 AM

Ring 3: Opens at 11:30 AM

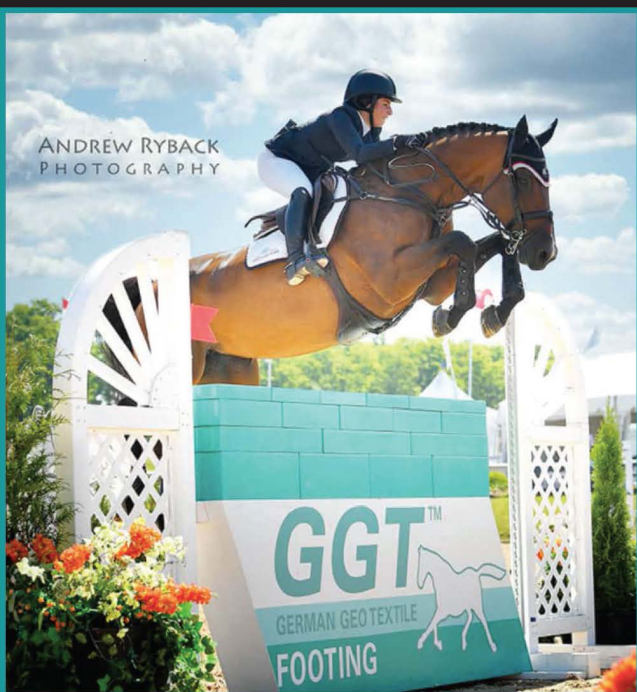
Rosato Oval: Opens at 1 PM

## **STALL RESERVATIONS**

*Stall reservations & payment must be received by August 18th via [HorseShowing.com](https://HorseShowing.com)*

- Stall are \$200 for the entire weekend. Stalls measure 10'x10' with doors. 12' aisles.
- Stalls can ONLY be reserved through [HorseShowing.com](https://HorseShowing.com)
- All stalls must be reserved with a credit card. Stalls can be paid by check upon departure. Please make checks payable to LCHSA.
- Stalls may not be occupied before noon on Friday, September 1 and must be vacated Monday evening, September 4, unless other arrangements are cleared through the show manager.
- \$50 late stall fee will be applied to stalls reserved and paid for after the above closing date.
- Stalls are not confirmed until all horse stall payments have been received.
- All modifications to submitted stall reservations must be emailed to Nathan Panetta at [nathanpanetta@yahoo.com](mailto:nathanpanetta@yahoo.com)
- Stalls are non-refundable after the closing date of entries - Thursday, August 24.
- Stalls are for entered horses only. Stall reservations may be re-opened for tack/equipment, if available.

PROUD SPONSOR OF THE  
**LUDWIG'S CORNER  
HORSE SHOW**



**ARENA  
FOOTING  
GROOMERS  
& MATTING  
SYSTEMS**

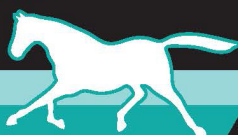
**GGT FOOTING  
is our Name...  
–And LEADING  
THE WORLD in  
ARENA TEXTILES  
is our Game!**

Follow Us Online



**GGT™**

**GERMAN GEO TEXTILE  
FOOTING**



**Get Your Arena Solution • Call: Cynthia Brewster Keating  
(864) 804.0011 • [www.ggtfooting.com](http://www.ggtfooting.com)**



# SATURDAY CLASS SCHEDULE

## ROSATO OVAL 8 AM START

*Classes presented by  
Covia*

### Hacking Only

- 101 Lead Line - Walk 3 and Under
- 102 Lead Line - W/T 3 and Under
- 103 Lead Line - Walk 4-6
- 104 Lead Line - W/T 4-6
- 105 Lead Line - Off Lead 4-6
- 1 Blue/Red (open card all TIP div.)  
Limit 1 Trip per entry
- 106 TIP Beg. Thoroughbred Hunter  
O/F 2'
- 107 TIP Beg. Thoroughbred Hunter  
O/F 2'
- 108 TIP Beg. Thoroughbred Hunter  
U/S
- 109 TIP Low Thoroughbred Hunter  
2'6 O/F \*1st round Classic
- 1110 TIP Low TB Handy Hunter 2'6  
O/F
- 111 TIP Hunter Classic 2'6 (Open  
card with division)
- 112 TIP Low Thoroughbred Hunter  
U/S
- 113 TIP Thoroughbred Hunter O/F  
2'9
- 114 TIP Thoroughbred Hunter O/F
- 115 TIP Thoroughbred Hunter  
Handy
- 116 TIP Thoroughbred Hunter U/S
- 117 The Family Class W/T
- 118 Side Saddle U/S - Appointments
- 119 Side Saddle O/F 2'6
- 120 Side Saddle Hunter Hack
- 121 Fox Hunter O/F 2'6"
- 122 \$100 Fox Hunter Handy Stake
- 123 Fox Hunter U/S
- 124 Hunt Teams 2'6"

## RING #2 8:00 AM START

*Classes presented by  
AJ Blosenski Inc.*

### SCHOOLING 7:00 - 7:45 am

- 125 Junior Beginner EQ W/T
- 126 Junior Beginner EQ W/T/C
- 127 Junior Beginner EQ 4 fences 2'
- 128 Junior Beginner EQ 8 fences
- 129 Adult Beginner EQ W/T
- 130 Adult Beginner EQ W/T/C
- 131 Adult Beginner EQ 4 fences 2'
- 132 Adult Beginner EQ 8 fences

### SHORT SCHOOLING BREAK

- 133 Mini-Stirrup EQ Walk
- 134 Mini-Stirrup EQ Walk-Trot
- 135 Mini-Stirrup W/T Pleasure
- 136 Mini-Stirrup EQ Figure 8
- 137 Shortest Stirrup EQ Walk
- 138 Shortest Stirrup EQ W/T
- 139 Shortest Stirrup EQ W/T/C
- 140 Shortest Stirrup EQ 4 X-rails
- 141 Short Stirrup EQ W/T
- 142 Short Stirrup EQ W/T/C

### SHORT SCHOOLING BREAK

- 143 LCHSA Mini Medal O/F 2'
- 144 Short Stirrup EQ O/F
- 145 Short Stirrup Hunter O/F
- 146 Short Stirrup Hunter O/F
- 147 Short Stirrup Hunter U/S
- 148 Pleasure Pony W/T
- 149 Pleasure Pony W/T/C
- 150 Pleasure Pony Bridle Path Hack
- 151 Pleasure Pony O/F 2'
- 152 LCHSA Low Hunter O/F
- 153 LCHSA Low Hunter O/F
- 154 LCHSA Low Hunter U/S

## RING #3 8 AM START

*Classes presented by  
Bentley Systems*

### Hacking Only

- 2 Blue/Red Warm-Up (open card)
- 155 Novice Equitation W/T
- 156 Novice Equitation W/T/C
- 157 Novice Equitation O/F P-2-'2'3/  
H-2'6
- 158 Novice Equitation O/F
- 159 Young Riders O/F
- 160 Young Riders O/F
- 161 Young Riders U/S
- 162 13 and Under Equitation W/T
- 163 13 and Under Equitation W/T/C
- 164 13 and Under Eq O/F P-2-'2'3/  
H-2'6
- 165 13 and Under Eq O/F
- 166 14-17 Equitation W/T
- 167 14-17 Equitation W/T/C
- 168 14-17 Equitation O/F P-2-'2'3/  
H-2'6
- 169 14-17 Equitation O/F
- 170 LCHSA Horse Flat Medal
- 171 LCHSA Pony Flat Medal

### 10 MINUTE SCHOOLING BREAK

- 172 M&S Low Children's Medal 2'6"
- 173 Outreach Local Hunter O/F 2'6"-  
2'9"
- 174 Outreach Local Hunter O/F
- 175 Outreach Local Hunter Handy
- 176 Outreach Local Hunter U/S

# SUNDAY CLASS SCHEDULE

## ROSATO OVAL 7:30 AM START

*Classes presented by  
Apex Arenas LLC*

### **No Hacking**

- 7 Ticketed Derby warm – up.  
Ponies 2'3", Horses 3"
- 201 \$5000 LCHSA Hunter Derby 3'
- 202 \$2500 LCHSA Pony Hunter  
Derby 2'3 – 2'6
- 3 Blue/Red Warm-Up (open card)
- 203 Low Hunter O/F 2' 9"
- 204 Low Hunter O/F 2' 9'
- 205 Low Hunter U/S
- 206 Pyranha Children's Horse  
Medal 3'
- 207 Children's Horse Hunter O/F 3'
- 208 Children's Horse Hunter O/F 3'
- 209 Children's Horse Hunter U/S
- 210 M&S Dover Saddlery Adult  
Medal 3'
- 211 Doris MacDonald PHSA Junior &  
Amateur Medal 3'
- 212 Adult Amateur Hunter O/F 3'
- 213 Adult Amateur Hunter O/F 3'
- 214 Adult Amateur Hunter U/S

### **Carriages Concours d'Elegance**

### **Kimberton Hunt Parade of Hounds**

### **Muddy Creek Vaulters**

### **Mounted Games**

## RING #2 8:00 AM START

*Classes presented by Precise  
Buildings LLC, Bird In Hand*

### **Hacking Only**

- 4 Blue/Red Warm-Up (open card)
- 215 Long Stirrup EQ W/T
- 216 Long Stirrup EQ W/T/C
- 217 Long Stirrup Hunter O/F 2'3"
- 218 Long Stirrup Medal O/F 2'3"
- 219 Children's Hunter Pony Model
- 220 M&S Children's Pony Medal
- 221 Children's Hunter Pony S/M 2'  
O/F
- 222 Children's Hunter Pony S/M O/F
- 223 Children's Hunter Pony S/M U/S
- 224 Children's Pony Hunter LG 2'6  
O/F
- 225 Children's Pony Hunter LG 2'6  
O/F
- 226 Children's Pony Hunter LG U/S
- 227 Low Adult Equitation W/T
- 228 Low Adult Equitation W/T/C
- 229 LCHSA Adult Flat Medal
- 230 Low Adult Equitation O/F 2'6"
- 231 M&S Low Adult Medal 2'6"
- 232 Low Adult Hunter O/F
- 233 Low Adult Hunter O/F
- 234 Low Adult Hunter U/S
- 235 Novice Hunter O/F 2'6
- 236 Novice Hunter O/F
- 237 Novice Hunter U/S

## RING #3 8:00 AM START

*Classes presented by  
H & K Group Inc.*

### **Hacking Only**

- 5 Blue/Red Warm-Up (open card)
- 238 Low Children's Hunter Pony O/F  
2'
- 239 Low Children's Hunter Pony O/F
- 240 Low Children's Hunter Pony O/F
- 241 Low Children's Hunter Pony U/S
- 242 Melvin Dutton Hunters O/F 2'3
- 243 Melvin Dutton Hunters O/F
- 244 Melvin Dutton Hunters O/F  
Handy
- 245 Melvin Dutton Hunters U/S
- 246 Pleasure Horse W/T/C
- 247 Pleasure Horse Bridle Path  
Hack
- 248 Pleasure Horse O/F 2'6
- 249 Low Child Hunter Horse O/F 2'6
- 250 Low Child Hunter Horse O/F
- 251 Low Child Hunter Horse O/F
- 252 Low Child Hunter Horse U/S

# MONDAY CLASS SCHEDULE

## ROSATO OVAL 8:00 AM START

*Classes presented by GGT Footing*

### **No Hacking**

- 301 Low Child/Adult Jumper .85m Table II 2b
- 302 Low Child/Adult Jumper .85m Table II Sec 1
- 303 Child/Adult Jumper 1.05m Table II, Sec. 2c
- 304 Child/Adult Jumper 1.05m Table II, Sec. 1
- 305 \$1500 Child/Adult Jumper 1.10m Table II, Sec. 2b
- 306 \$750 LCHSA Speed Class 1.10m Table II, Sec. 1
- 307 \$500 LCHSA Jumper Stake 1.15m Table II, Sec. 2c
- 308 \$10,000 LCHSA Mini-Prix 1.25m Table II, Sec. 2a
- 309 Low Schooling Jumper .75 Table II Sec. 2c
- 310 Low Schooling Jumper .75 Table II Sec. 1
- 311 \$250 Low Schooling Jumper Stake .75 Table II, Sec 2b
- 312 Outreach High Schooling .90-.95m Table II Sec. 2c
- 313 Outreach High Schooling .90m-.095m Table II Sec. 1
- 314 \$250 Outreach High Schooling Stake .90m-.95m Table II, Sec 2b

## RING #2 8:30 AM START

*Classes presented by California Closets*

**HACK - 6:45 AM - 7:30 AM  
DRAG - 7:30 AM**

- 315 LCHSA Young Hunter Under Saddle Horses
- 316 LCHSA Young Hunter Under Saddle Ponies
- 317 Junior Handler
- 318 Amateur Handler

### **Schooling Young Hunter Pro Only**

- 6a B/R Young Hunter Pro - 1 Trip Only
- 319 Young Hunter Pro O/F 2'6
- 320 Young Hunter Pro O/F
- 321 Young Hunter Pro U/S

### **Schooling Young Hunter Amateur Only**

- 6b B/R Warm-Up Young Hunter Amateur - 1 Trip Only
- 322 Young Hunter Junior/Amateur O/F 2'6
- 323 Young Hunter Junior/Amateur O/F
- 324 Young Hunter Junior/Amateur U/S

### **Schooling Small Hunter Only**

- 6c B/R Warm-Up Small Hunter - 1 Trip Only
- 325 Small Hunter O/F 2'6"
- 326 Small Hunter O/F
- 327 Small Hunter O/F
- 328 Small Hunter U/S

## RING 3 8:00 AM START

*Classes presented by Goshen Hill Farm*

### **No Hack No Drag**

- 329 Itty Bitty Jumper .65m Table II, Sec 2c
- 330 Itty Bitty Jumper .65m Table II, Sec 1
- 331 \$100 Itty Bitty Jumper Stake .65m Table II, 2b
- 332 Pony Jumper .80m Table II, Sec 2c
- 333 Pony Jumper .80m Table II, Sec 1
- 334 \$100 Pony Jumper Stake .80m Table II, 2b
- 335 Hopeful Jumper .85m Table II, Sec 2c
- 336 Hopeful Jumper .85m Table II, Sec 1
- 337 \$100 Hopeful Jumper Stake .85m Table II, 2b
- 338 TIP Low Jumper .75 Table II, Sec 2c
- 339 TIP Low Jumper .75 Table II, Sec 1
- 340 \$100 TIP Low Jumper Stake .75 Table II, Sec 2b
- 341 TIP High Jumper .85m Table II, Sec 2c
- 342 TIP High Jumper .85m Table II, Sec 1
- 343 \$100 TIP Jumper Classic .85m Table II, 2a

# 2022 TROPHY & SPECIAL AWARDS WINNERS

**Kathleen F. Shine Memorial Trophy**  
**Novice EQ**  
Dakota Dengler

**The Willowstone Trophy**  
**13 & under EQ**  
Angelina De Bruijn

**The Willowstone II Trophy**  
**14 - 17 EQ**  
Henry Hollis

**David W. Wilson Memorial Trophy**  
**Children's Hunter Pony**  
S/M: LITTLE JOE / Cady E. Snavelly  
L: BLUE SKIES UNLOCKED / Ariana Lino

**The Grand Hunter Pony Trophy**  
LITTLE JOE / Cady E. Snavelly

**Ladies Side Saddle Under Saddle Trophy**  
NO NEED TO BLUFF / Kellie Andrews

**Francis W. Godshall Perpetual Trophy**  
**Novice Hunter**  
MINI COOPER / Vanessa Mulkey

**Catch 22 Perpetual Trophy**  
**Low Hunter**  
ILLICO / Leigh Berman

**Elizabeth P. Mulhern Memorial Trophy**  
**The Family Class**  
The Kucharczuk Family

**The Barbara Mannis Memorial Trophy**  
**Adult Amateur Hunter**  
CAPTIVATING / Emma Levine

**The Best Adult Rider Trophy**  
**High Point in Adult EQ & Medals**  
Kelly Cocke

**Reinbow's End Farm Perpetual Trophy**  
**Grand Young Hunter**  
FLEUR / Sandy Ferrell

**DunnHill Farm "Olivia" Memorial Trophy**  
**Grand Hunter Horse**  
BELVEDERE / Ella Zaengle

**Dorothy Corrado Memorial Trophy**  
**Best Child Rider on a Horse**  
Henry Hollis

**Craig L. Kunsman Memorial Trophy**  
**Child / Adult Jumper Classic**  
FERNHILL LUCKY ONE / Jennie Towner

**Kimberton Hills Farm Perpetual Trophy**  
**LCHSA Jumper Classic Mini-Prix**  
SERGIO / Wilhelmina Horzempa

**The Rosato Perpetual Trophy**  
**LCHSA Concours d'Elegance**  
John and Penny Hunt

**Robert M. Dunn Memorial Perpetual Trophy**  
**Sportsmanship in Driving**  
Merrill Walters

**Grand Champion Short Stirrup**  
JUST FOR KEEPS / Paige Buzby

**Best Child Rider - Saturday**  
Henry Hollis

**Best Child Rider on a Pony - Sunday**  
Madelyn DuBois

**Hunter Horse Style Award**  
CAPTIVATING / Emma Levine

**Hunter Pony Style Award**  
LITTLE JOE / Cady E. Snavelly

**Jumper Style Award**  
COLLEGE FUND / Wilhelmina Horzempa

**Pony Jumper Style Award**  
GALLABAY'S ABIGAIL / Celeste Burda

**Leading Trainer**  
Wilhelmina Horzempa

**Emerging Trainer**  
Katee Snyder

# 2023 LCHSA MEMBERS

*\* list current at time of printing*

## INDIVIDUAL & FAMILY MEMBERS

Steve Bazil & Gale Rippel  
Martin Blumenthal  
Allison Brewer  
Michael & Kelly Cocke  
Mel & Lynne Cooksey  
Lisa DeCordre  
Donna Delany  
Lisa Denmars  
Priscilla Denver  
Claudia Dollinger  
Daniel Doyle  
George & Tommi Dulchinos  
Arthur Ewell  
Kathleen Ewell

Wayne Grafton  
The Guthrie Family  
Jeff Hatfield  
Gary & Donna Holowis  
Elizabeth Huxster  
John & Maria Jacobs  
Lauren Klutchka  
Jessica Lampe  
Barbara Mako  
Melanie McHenry  
Karen McDonald  
Jason & Dr. Constance  
Mesiarik  
Jim & Joan Moore

Jane Quinn  
Sarah Reese  
Tim & Joan Riddle  
Adam Rogers  
Judith Sagal  
Leah Sharp  
Paige Singer  
Chris & Joanne Terebesi  
Sandi Terry  
Barbara Van Horn  
Margi Watters  
Kyle Wherrity  
Jennifer Wollenberg

## BARN MEMBERS

Ellen Cabot  
Oak & Maple Equestrian, LLC  
Jeana Hollands  
Susan Ibach  
Arlene Kulp  
Sara Jane Lubrano  
Nancy & David Moffitt  
Kristen Nolte  
Dawn Taylor-Bell

## OPEN SPACE MEMBERS

Stanley Hess  
Patricia O'Shea



PICKERING  
VALLEY  
FEED & FARM





# PRINCETON EQUESTRIAN LEAGUE



The Princeton Equestrian League is dedicated to providing high quality competitions for Hunter, Jumper and Equitation riders. The league provides an opportunity for riders to compete throughout the year and qualify for the prestigious Princeton Equestrian League National Finals at Princeton Show Jumping in Skillman, NJ.

Rider must be a League member in order for points to count for year-end awards. Any horse shown by a member rider will earn points in the division. Rider membership must be received in the League Office or Horse Show Office by the completion of the show for points to count.

The qualifying period for 2023 will be September 1, 2022 - August 31, 2023. To join, use application in this prize list, apply at the horse show or online. \$25 yearly per rider or \$200 for lifetime membership.

**2023 Finals will be held at Princeton Show Jumping.**

[Princetonequestrianleague.com](http://Princetonequestrianleague.com)

[Carey@princetonequestrianleague.com](mailto:Carey@princetonequestrianleague.com) | (609)924-2932



# PRINCETON EQUESTRIAN LEAGUE

## 2023 Membership Application

Name: \_\_\_\_\_ Birthdate: \_\_\_\_\_

Address: \_\_\_\_\_  
\_\_\_\_\_

Home phone: \_\_\_\_\_ Cell phone: \_\_\_\_\_

Email: \_\_\_\_\_

Status (check applicable): \_\_\_\_\_ Junior \_\_\_\_\_ Amateur \_\_\_\_\_ Professional

Trainer Name: \_\_\_\_\_ Trainer Email: \_\_\_\_\_

2023 Membership \$25 \_\_\_\_\_ Lifetime Membership \$200 \_\_\_\_\_

Signature of Applicant: \_\_\_\_\_

The Princeton Equestrian League is dedicated to providing high quality competitions for Hunter, Jumper and Equitation riders. The league provides an opportunity for riders to compete throughout the year and qualify for the prestigious Princeton Equestrian League National Finals at Princeton Show Jumping in Skillman, NJ.

Rider must be a League member in order for points to count for year-end awards. Any horse shown by a member rider will earn points in the division. *Rider membership must be received in the League Office or Horse Show Office by the completion of the show for points to count.*

*The qualifying period for 2023 will be September 1, 2022 - August 31, 2023*

Membership Fee: \$25 yearly per rider or \$200 for lifetime membership.

Checks payable & mailed to: Princeton Equestrian League, 1315 The Great Rd., Princeton, NJ 08540

\*Riders may also apply at the horse show or online.

**2023 Finals will be held at Princeton Show Jumping**

[Princetonequestrianleague.com](http://Princetonequestrianleague.com)

[Carey@princetonequestrianleague.com](mailto:Carey@princetonequestrianleague.com) | (609)924-2932



*Created by equine professionals to meet the demands & unique risks of equestrians.*

*As an employee-owned company, our pride in ownership drives us to be an insurance agency unlike any other.*

***Marshall  
& Sterling***

**INSURANCE**

EQUISPORT DIVISION

[www.MarshallSterling.com/Equisport](http://www.MarshallSterling.com/Equisport)

12798 West Forest Hill Blvd., Suite 102 Wellington, FL 33414 • Tel: 800-836-3046 • Fax: 561-557-5305



## *The Marshall & Sterling Insurance League National Finals, and the Midwest Regional Marshall & Sterling Insurance League Finals!*

### WHAT DIVISIONS COUNT?

Finals competition will be offered in the following divisions:

#### **HUNTERS**

Children's Hunter Horse  
Children's Hunter Pony  
Adult Hunter Classic  
Schneiders Saddlery™ 3'5" Hunter  
Bit O' Straw Hunter Classic  
HITS 1 Hunter 2'  
HITS 2 Hunter 2'6"  
HITS 3 Hunter 2'9"  
HITS Novice Child Hunter Classic  
HITS Novice Adult Hunter Classic

#### **JUMPERS**

Children's Jumper  
Adult Jumper  
HITS Modified Child/Adult Jumper Classic  
HITS Low Child/Adult Jumper Classic

#### **EQUITATION**

M&S Junior Medal  
Dover Saddlery™ Adult Medal  
Pyranha™ Children's Horse Medal  
M&S Children's Pony Medal  
M&S 2'6" Adult Medal  
M&S 2'6" Children's Medal  
M&S Junior/Amateur Horsemanship Medal

### WHAT HORSE SHOWS COUNT?

Over 1,300 horse shows across the country are member events of the Marshall & Sterling Insurance League. A complete list of shows is available on our website - [HITSShows.com](http://HITSShows.com)

### WHAT IS THE QUALIFYING PERIOD?

The qualifying period for 2023 is Aug. 29, 2022 to Aug. 27, 2023.

### WHERE ARE THE FINALS IN 2023?

#### **THE NATIONAL FINALS**

HITS-on-the-Hudson, Saugerties, NY | Sept. 13-17, 2023

#### **MIDWEST REGIONAL FINALS**

Lamplight Fall Classic I  
HITS Lamplight Equestrian Center, Wayne, IL | Sept. 13-17, 2023

#### **WEST COAST FINALS**

Del Mar Fall Classic  
Del Mar Showpark, Del Mar, CA | Sept. 27 - Oct. 1, 2023

### DO I NEED TO BE A MEMBER?

Riders must be members of the Marshall & Sterling Insurance League in order for points to count. Only the Rider need join. There is just one membership no matter how many horses you show!

**For more information, please call League Representative, Patti Guerriero at 845.246.8833 or visit our website at [HITSShows.com](http://HITSShows.com).**



### **2023 Membership Application**

**Note:** Riders must be members for points to count toward the Finals.

PLEASE PRINT LEGIBLY AND BE SURE TO INCLUDE ALL THE INFORMATION REQUESTED.



Name \_\_\_\_\_

Birth date \_\_\_\_\_ / \_\_\_\_\_ / \_\_\_\_\_ (Required for Junior & Amateur Applicants)  
Month Day Year

Address \_\_\_\_\_

Home Phone \_\_\_\_\_

Address \_\_\_\_\_

Cell Phone \_\_\_\_\_

City/State/Zip \_\_\_\_\_

E-mail \_\_\_\_\_

Status (please check one): ☐ Junior ☐ Amateur ☐ Professional

Trainer Name \_\_\_\_\_

Signature \_\_\_\_\_ Date \_\_\_\_\_

Trainer E-mail \_\_\_\_\_

#### **Membership Fee: \$40**

Checks payable & mailed to: Marshall & Sterling Insurance League, HITS LLC, 151 Stockade Dr., Kingston, NY 12401

## CREDIT CARD AUTHORIZATION FORM



To use this service, please fill out the form below and return it with your entry blank and stabling reservations. NOTE: A 3% service fee will be assessed on all credit card charges.

### ONE FORM PER PAYEE

HORSE(S) FOR WHICH TO USE THIS CARD:

---

---

---

OWNER: \_\_\_\_\_

TRAINER: \_\_\_\_\_

### CREDIT CARD INFORMATION:

Cardholder Name: \_\_\_\_\_

Address: \_\_\_\_\_

City: \_\_\_\_\_ STATE: \_\_\_\_\_ ZIP: \_\_\_\_\_

Phone: \_\_\_\_\_

CREDIT CARD NUMBER: \_\_\_\_\_

EXPIRATION: \_\_\_\_/\_\_\_\_ VERIFICATION CODE: \_\_\_\_\_

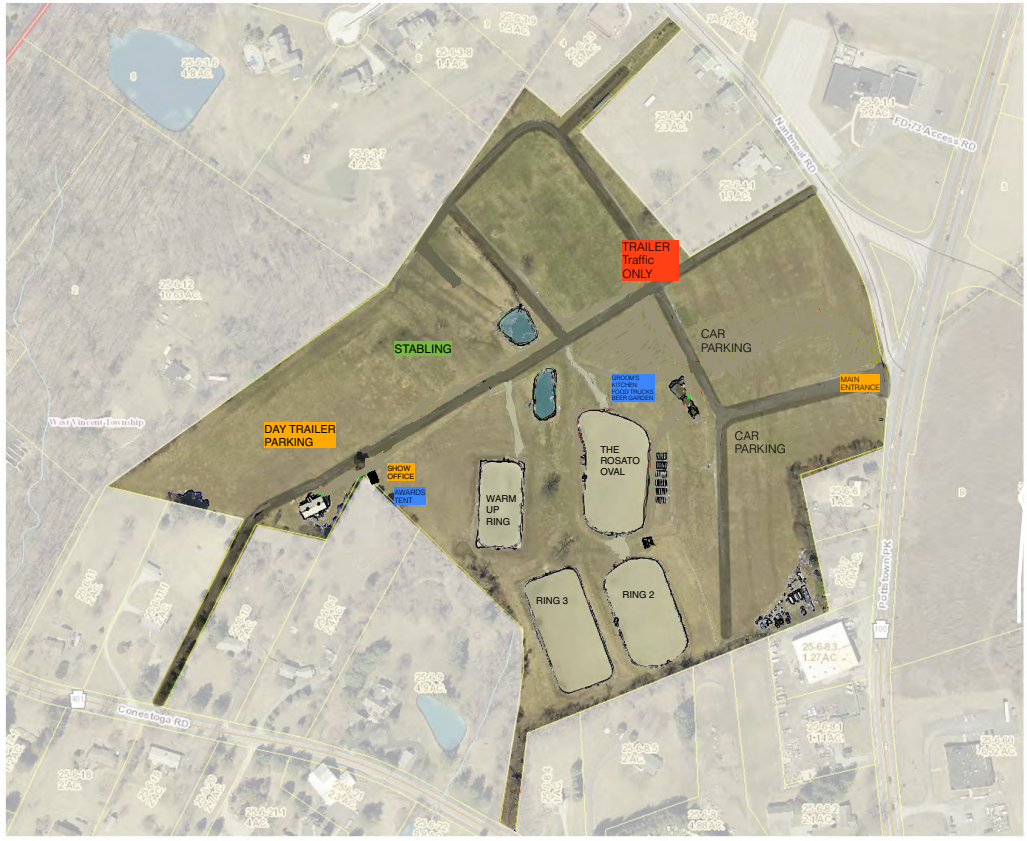
AUTHORIZED SIGNATURE: \_\_\_\_\_

If you prefer to supply your credit card information by voice only,  
please contact the Show Office for assistance.

Prior to show: (908)-534-8833

During the show: (908)-800-3135





Ludwig's Corner Horse Show Grounds